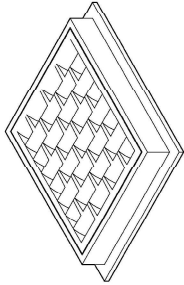
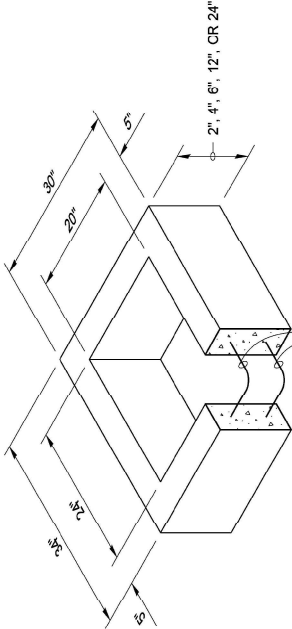


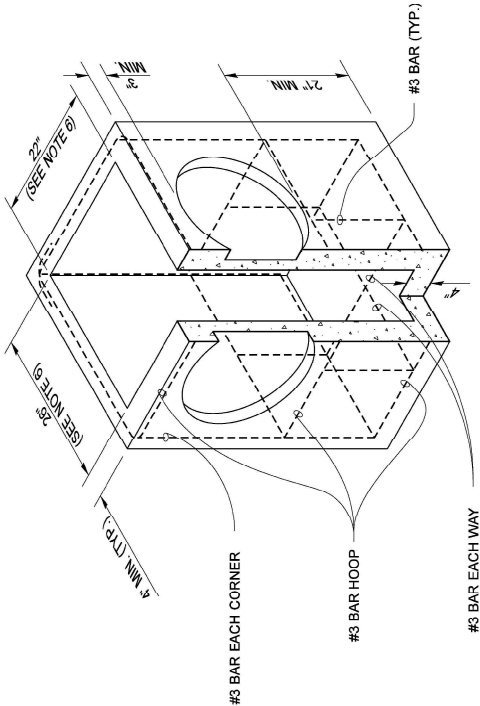
Type 1 Catch Basin



FRAME AND VANED GRATE



RECTANGULAR ADJUSTMENT SECTION



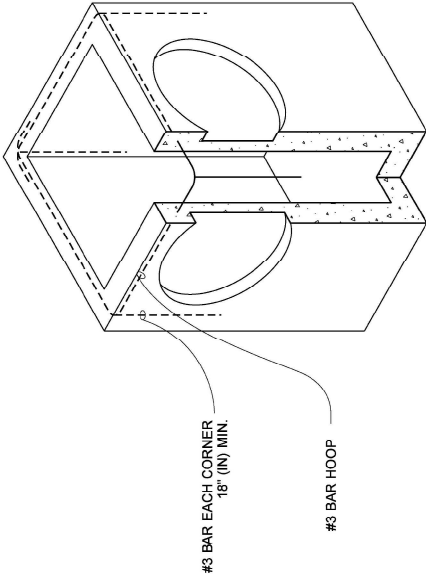
PRECAST BASE SECTION

PIPE ALLOWANCES	
PIPE MATERIAL	MAXIMUM INSIDE DIAMETER (INCHES)
REINFORCED OR PLAIN CONCRETE	12'
ALL METAL PIPE	15'
CPSSP * (STD. SPEC. SECT. 9-05.20)	12'
SOLID WALL PVC (STD. SPEC. SECT. 9-05.12(1))	15'
PROFILE WALL PVC (STD. SPEC. SECT. 9-05.12(2))	15'

* CORRUGATED POLYETHYLENE STORM SEWER PIPE

NOTES

- As acceptable alternatives to the rebar shown in the **PRECAST BASE SECTION**, fibers (placed according to the Standard Specifications), or wire mesh having a minimum area of 0.12 square inches per foot shall be used with the minimum required rebar shown in the **ALTERNATIVE PRECAST BASE SECTION**. Wire mesh shall not be placed in the knockouts.
- The knockout diameter shall not be greater than 20" (in). Knockouts shall have a wall thickness of 2" (in) minimum to 2.5" (in) maximum. Provide a 1.5" (in) minimum gap between the knockout wall and the outside of the pipe. After the pipe is installed, fill the gap with joint mortar in accordance with **Standard Specification Section 9-04.3**.
- The maximum depth from the finished grade to the lowest pipe invert shall be 5' (ft).
- The frame and grate may be installed with the flange down, or integrally cast into the adjustment section with flange up.
- The Precast Base Section may have a rounded floor, and the walls may be sloped at a rate of 1 : 24 or steeper.
- The opening shall be measured at the top of the **Precast Base Section**.
- All pickup holes shall be grouted 'full' after the basin has been placed.



ALTERNATIVE PRECAST BASE SECTION
(SEE NOTE 1)